

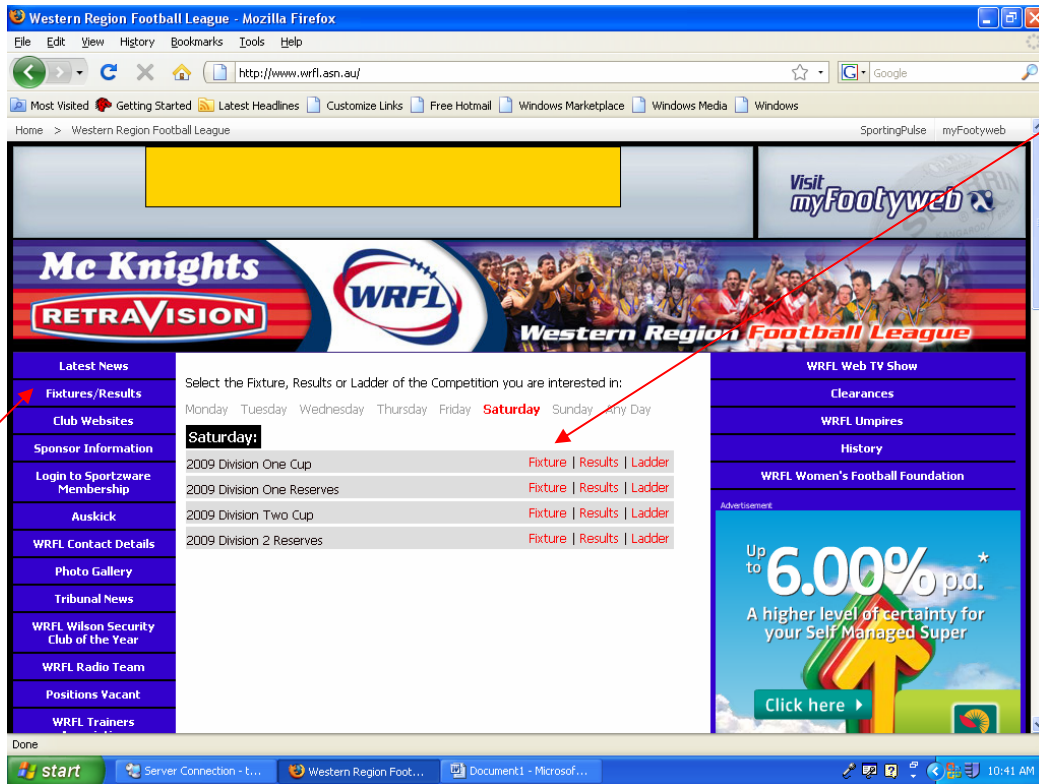


WRFL USER MANUAL
(AS AT MARCH, 2009)

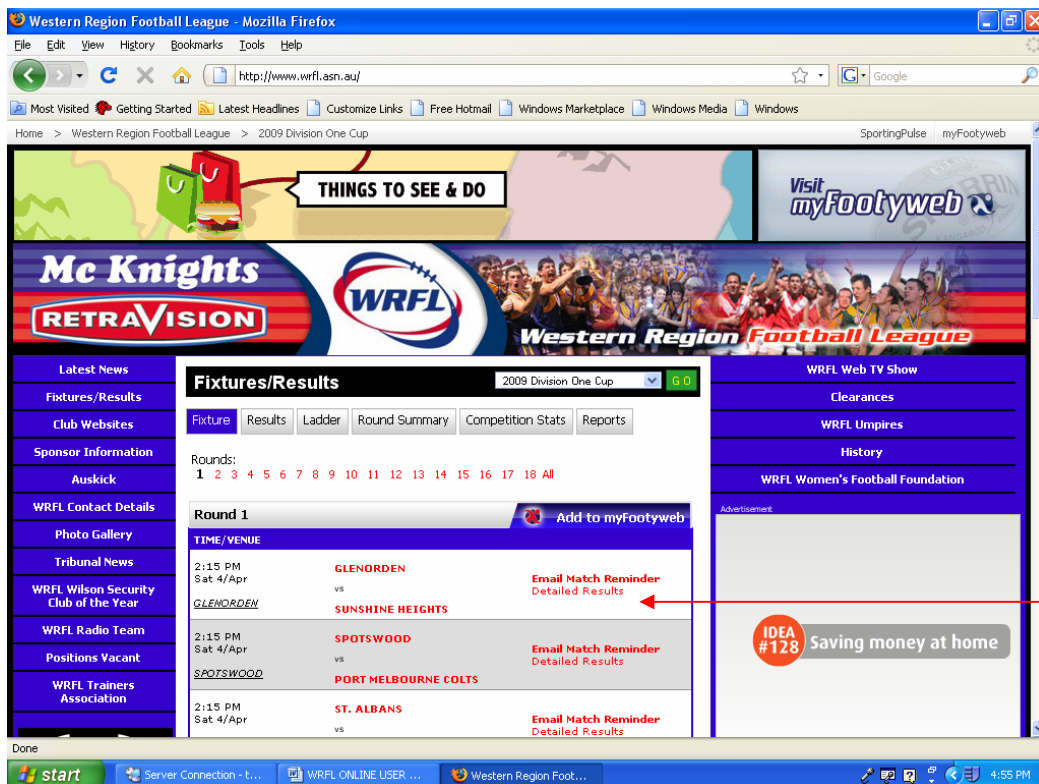
INDEX

Logging into your match.....	2
Entering teams.....	5
Jumper numbers	7
Add/edit team officials	8
Printing team sheets.....	9
Entering scores, best player and goal kickers.....	10
Appendix 1 – Time Lines	13
Appendix 2 – Number of Players per Match	14

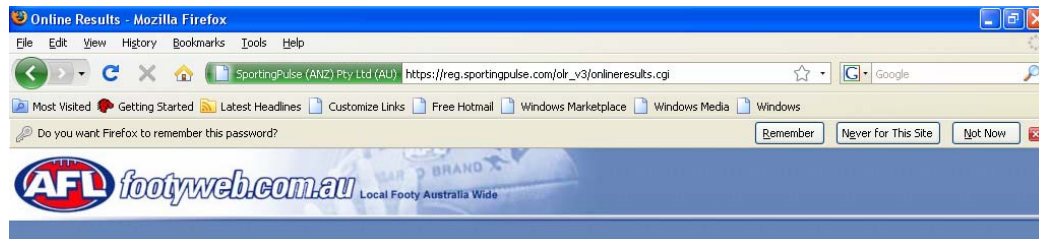
To log into your match, go to the WRFL website (www.wrfl.asn.au) and click on Fixtures/Results. Click on "Fixtures" next to the appropriate grade:-



Click on "Enter Results" next to the appropriate match:-



Enter your Username and Password and click "Login":-



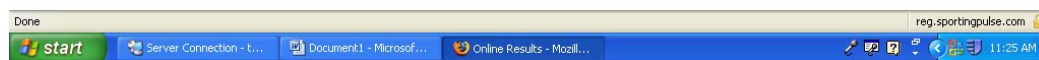
Please enter the Username and Password supplied by your association to submit results for this match.

Username:

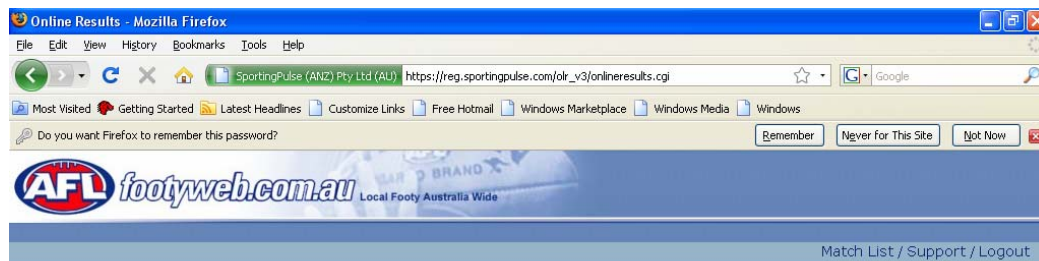
Password:

Login

© Copyright SportingPulse - Online Results v3.10



To select the appropriate game, enter the date range of the round of matches, then click "Show Matches":-



Show matches between (dd/mm/yyyy): 03/04/2009 and (dd/mm/yyyy): 7/4/2009

Show matches

To submit results for multiple matches without returning to this screen, use tabbed browsing (for compatible browsers). Hold down the CTRL key whilst clicking the 'Enter Results' link

To view match list, enter the match date range and click the **Show matches** button above



Click on "Enter Results" next to the appropriate match:-

Online Results - Mozilla Firefox

File Edit View History Bookmarks Tools Help

https://reg.sportingpulse.com/olr_v3/onlineresults.cgi

Do you want Firefox to remember this password? Remember Never for This Site Not Now

AFL footyweb.com.au Local Footy Australia Wide

Match List / Support / Logout

Show matches between (dd/mm/yyyy): 10/3/2008 and (dd/mm/yyyy): 7/4/2008 Venue: Comp:

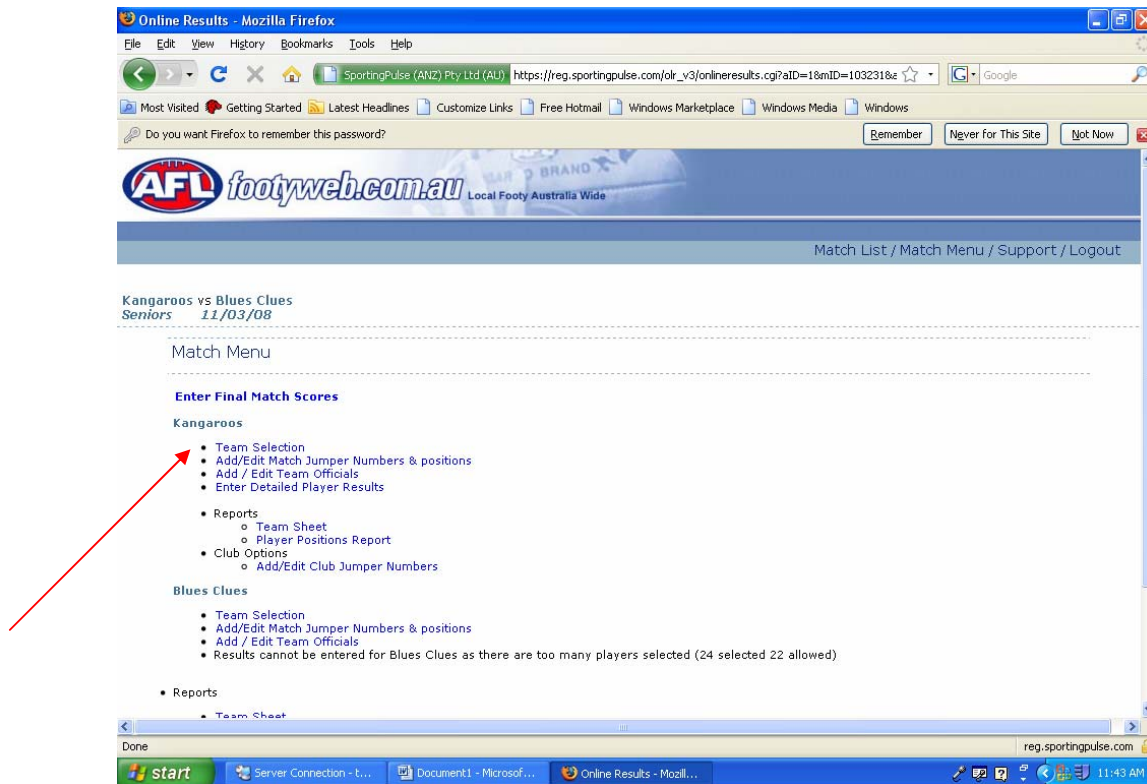
Show matches

To submit results for multiple matches without returning to this screen, use tabbed browsing (for compatible browsers). Hold down the CTRL key whilst clicking the 'Enter Results' link

	Team 1	Team 2	Competition	Match Date	Venue	Last Updated (AET)
--Enter Results--	Kangaroos	Blues Clues	Seniors	11/03/2008 14:00	Arden Street	19/03/2009 17:48:12
--Enter Results--	Blues Clues	Magpies	Seniors	13/03/2008 14:00	Princes Park	23/03/2009 19:22:55
--Enter Results--	Saints	Blues Clues	Seniors	25/03/2008 14:00	Moorabbin	16/03/2009 20:53:03
--Enter Results--	Blues Clues	Demons	Seniors	01/04/2008 14:00	Princes Park	23/03/2009 14:59:48

start Server Connection - t... Document1 - Microsof... Online Results - Mozill... reg.sportingpulse.com 11:29 AM

Click on “Team Selection” under your team section:-



For Round 1, you will need to add all players to the match (applicable to that match).

For all matches after Round 1, you can load players from the previous match and either add or remove players.

To add players to a game, either double click on a name from the “Available Players” list on the left hand side of the page, or highlight a name and click “Add”.

To remove players from a game, either double click on name from the “Selected Players” list on the right hand side of the page, or highlight a name and click “Remove”.

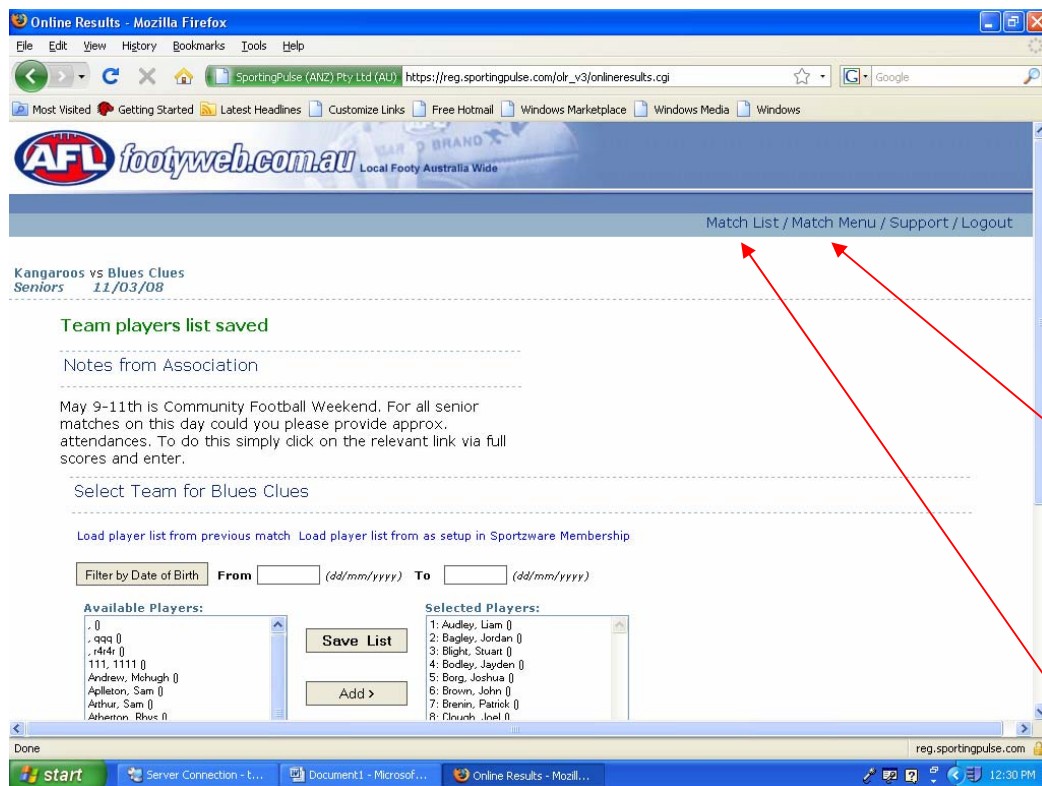
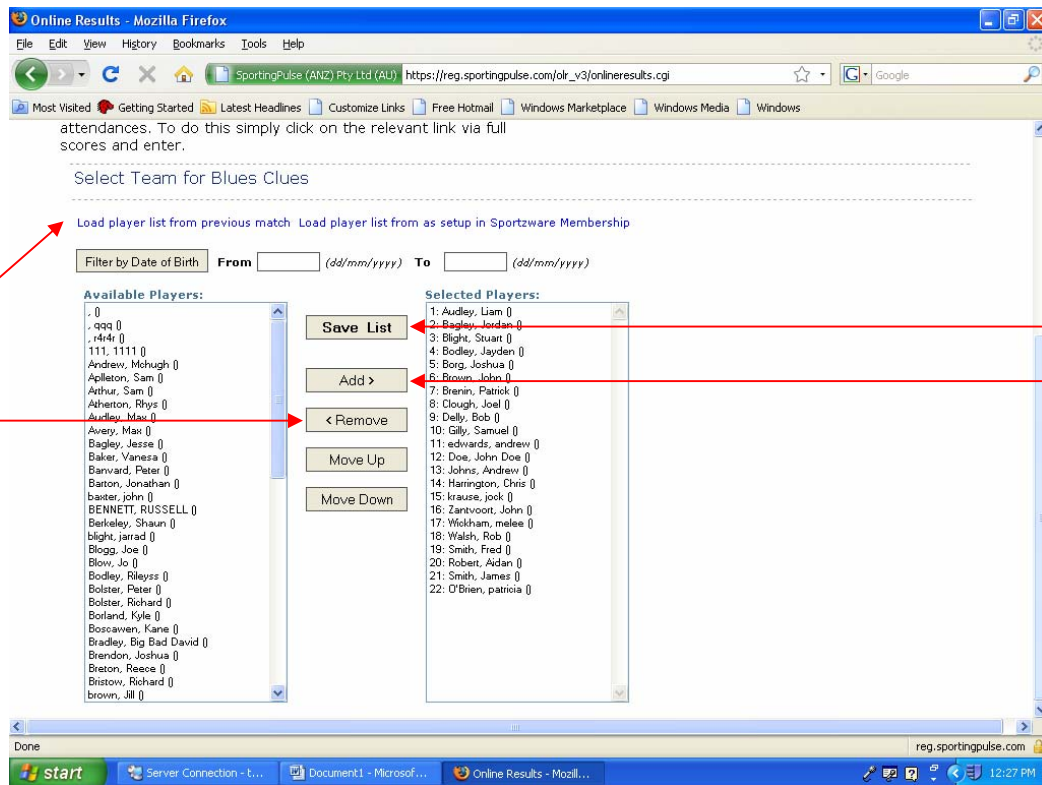
To load players from your previous match, click on “Load Player List From Previous Match”.

Once the “Selected Players” have been finalised, click on “Save List”.

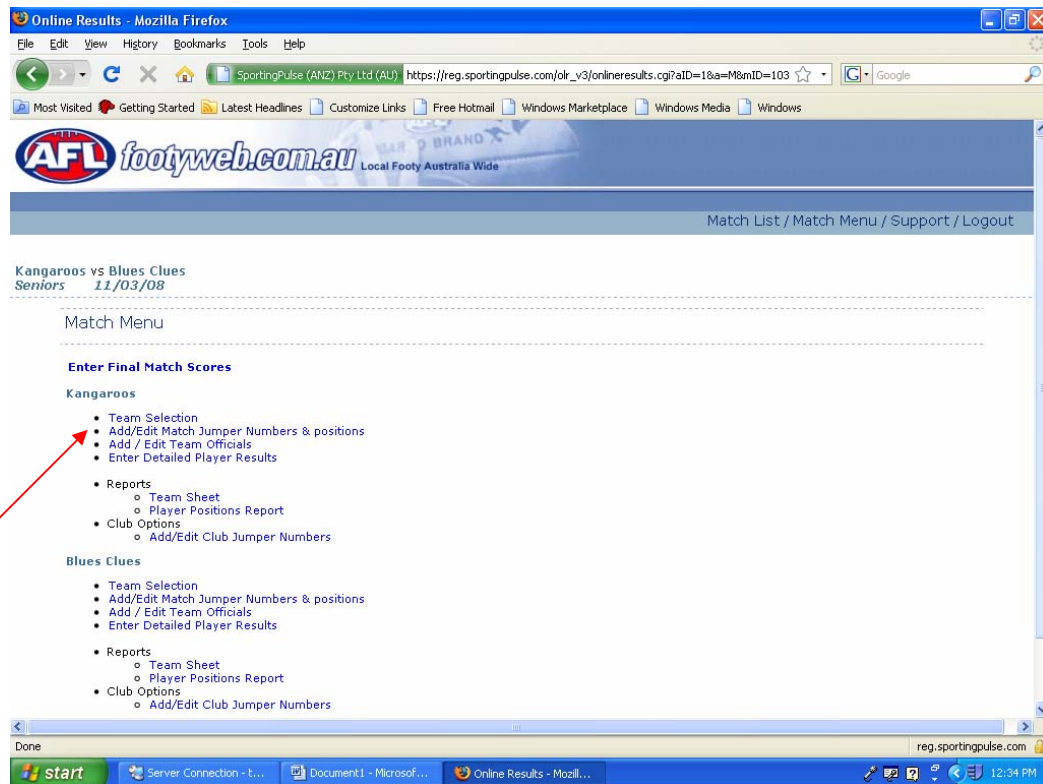
To return to the match list to enter into a different game, click on “Match List” at the top, right hand side of the page.

To return to the match menu for the current game, click on “Match Menu” at the top, right hand side of the page.

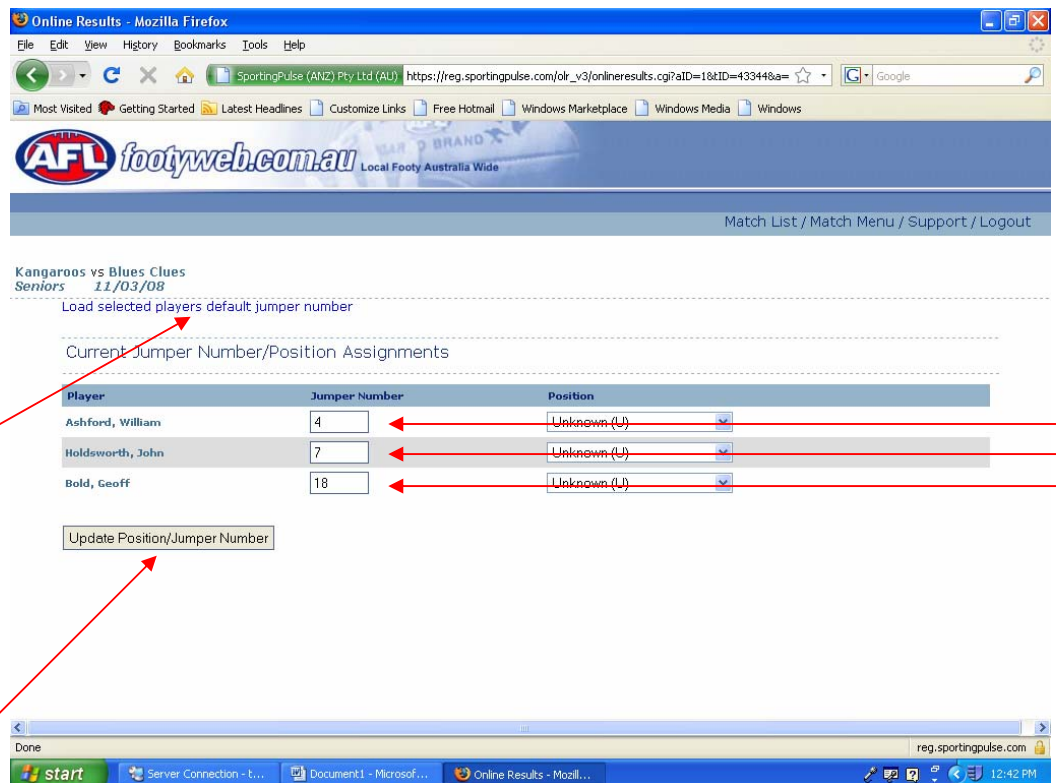
Note: players suspended by the league Tribunal will not be located under the “Available Players” box until they have served their suspension.



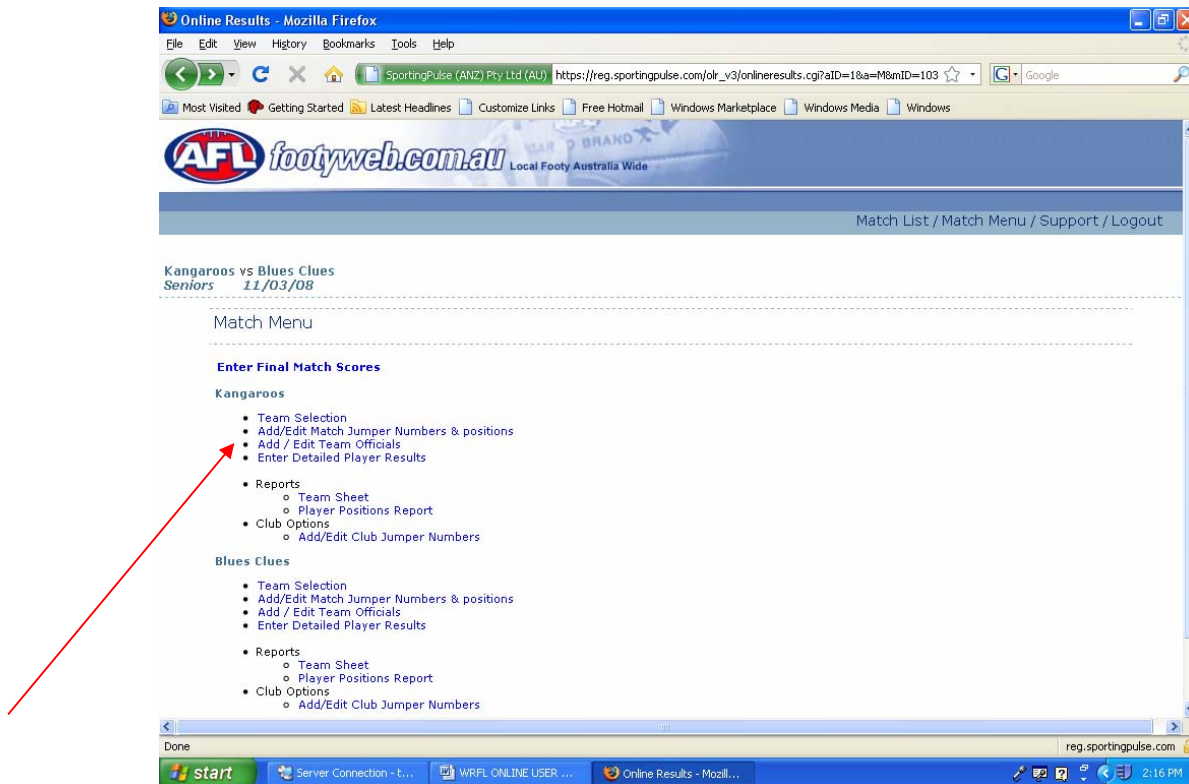
To assign a jumper number to each player, click on "Add/Edit Match Jumper Numbers & Positions":-



Type in the players jumper number in the box next to their name. If jumper numbers are the same as previous weeks, click "Load Selected Players Default Jumper Number". Positions do not need to be entered. Click on "Update Position/Jumper Number" when completed.



To enter coaches and match day staff, click on “Add/Edit Team Officials”:-



In Round 1, you will need to add all officials to the match.

For all matches after Round 1, you can load officials from the previous match and make changes where necessary.

To add or change an official, click on “Change Official”, then select an official from the dropdown box (will list members from your Sportware Members Database) or type the officials name in the blank box. Click on “Update Official” when selected or typed.

To load official from the previous match, click on “Load Team Officials From Previous Match”. Changes can be made as per above instructions.

To add members to the dropdown box, you will need to go back to the WRFL website (www.wrfl.asn.au) and login to the Members Database.

Click on “Match Menu” to return to the main page.

Online Results - Mozilla Firefox

File Edit View History Bookmarks Tools Help

https://reg.sportingpulse.com/olr_v3/onlineresults.cg?alD=103231&t=

AFL footyweb.com.au Local Footy Australia Wide

Match List / Match Menu / Support / Logout

Kangaroos vs Blues Clues
Seniors 11/03/08

Team Officials Maintenance

Load team officials from previous match

Below is a list of team match officials, to change an official click on the **change official** link to the right of the existing (or blank) selection.

Coaching Staff

Coach: -Select Team official- or (type name): David Cannizzo Update Official

Ass.Ch1: Joel Hicks (change official)

Z.: Julie Thompson (change official)

Team Rnr: Shane Borland (change official)

Interchange: (change official)

Medical Officers

1.: Fred Bloggs (change official)

2.: ian (change official)

3.: Anthony Bayer (change official)

4.: (change official)

5.: (change official)

Stewards

Authenticated by COMODO CA Limited
reg.sportingpulse.com

start Server Connection - t... WRFL ONLINE USER ... Online Results - Mozill...

2:22 PM

To print a copy of your team sheet, click on "Team Sheet" under the reports section:-

Online Results - Mozilla Firefox

File Edit View History Bookmarks Tools Help

https://reg.sportingpulse.com/olr_v3/onlineresults.cg?alD=103231&t=

AFL footyweb.com.au Local Footy Australia Wide

Match List / Match Menu / Support / Logout

Kangaroos vs Blues Clues
Seniors 11/03/08

Match Menu

Enter Final Match Scores

Kangaroos

- Team Selection
- Add/Edit Match Jumper Numbers & positions
- Add / Edit Team Officials
- Enter Detailed Player Results
- Reports
 - Team Sheet
 - Player Positions Report
- Club Options
 - Add/Edit Club Jumper Numbers

Blues Clues

- Team Selection
- Add/Edit Match Jumper Numbers & positions
- Add / Edit Team Officials
- Enter Detailed Player Results
- Reports
 - Team Sheet
 - Player Positions Report
- Club Options
 - Add/Edit Club Jumper Numbers

Online Results - Team Sheet - Mozilla Firefox

File Edit View History Bookmarks Tools Help

https://reg.sportingpulse.com/olr_v3/team_sheet.cg?alD=103231&t=

Latest Headlines Customize Links Free Hotmail Windows Marketplace Windows Media Windows

Online Results - Team Sheet

BLUES CLUES - Team Sheet
Association: Footyweb Training

Teams: Kangaroos V Blues Clues Competition: Seniors Match Date: 11/03/08
Venue: Arden Street

Pos	Player	Score	Best (1-5)
1			
2			
3			
4			
5			
6	Bang, Joshua		
7	Brown, John		
8	Brown, Patrick		
9	Cleugh, Neal		
10	Duffy, Rob		
11	Duffy, Samuel		
12	Edwards, Andrew		
13	Goss, John Des		
14	Johns, Andrew		
15	Harrington, Chris		
16	Krause, Jack		
17	Lemmon, John		
18	McKinnon, Ian		
19	Walsh, Rob		
20	Smith, Fred		
21	Robert, Adrian		
22	Smith, James		
23	O'Brien, Patricia		
24			
25			
26			

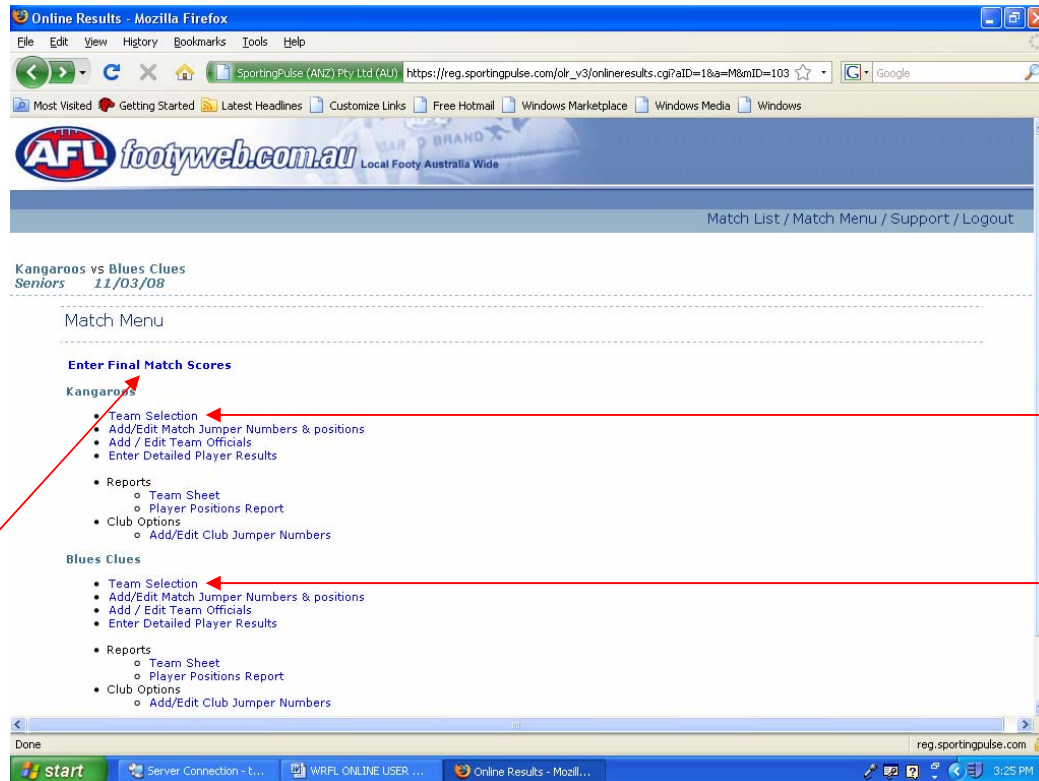
start Server Connection - t... WRFL ONLINE USER ... Online Results - Team...

12:09 PM

Please refer to the Time Line Table (Appendix 1) for score entering requirements. This is the HOME teams responsibility!

From information provided on the team sheet, click on "Team Selection" and remove players from the match who were selected but did not play. Add players who were not selected but played. Follow instructions beginning on page 5 of this manual. The maximum number of players who can compete in a game, depending on grade, is listed in Appendix 2. This step should be completed by the HOME club for both the HOME AND AWAY teams.

To enter scores, click on "Enter Final Match Scores":-



Enter all quarter by quarter. Enter the full time goals, behinds and total points.

From the dropdown box, select the match result for BOTH team.

Click on "Save".

Online Results - Mozilla Firefox

File Edit View History Bookmarks Tools Help

https://reg.sportingpulse.com/olr_v3/onlineresults.cg?alD=1&a=F_d&mID=11

AFL footyweb.com.au Local Footy Australia Wide

Match List / Match Menu / Support / Logout

Kangaroos vs Blues Clues
Seniors 11/03/08

Save

Kangaroos		Blues Clues	
Quarter Time Goals	3	Quarter Time Goals	2
Quarter Time Behinds	1	Quarter Time Behinds	3
Half Time Score Goals	5	Half Time Score Goals	6
Half Time Score Behinds	3	Half Time Score Behinds	5
Three Quarter Time Goals	8	Three Quarter Time Goals	10
Three Quarter Time Behinds	6	Three Quarter Time Behinds	5
Full Time Score Goals	11	Full Time Score Goals	10
Full Time Score Behinds	8	Full Time Score Behinds	5
Full Time Score Points	74	Full Time Score Points	65
Kangaroos - Final Result		Blues Clues - Final Result	
Final Result: Won		Final Result: Lost	

Done reg.sportingpulse.com 3:39 PM

From the main menu, click on "Enter Detailed Player Results". This will need to be completed for both the HOME AND AWAY teams.

Online Results - Mozilla Firefox

File Edit View History Bookmarks Tools Help

https://reg.sportingpulse.com/olr_v3/onlineresults.cg?alD=1&a=M&mID=103

AFL footyweb.com.au Local Footy Australia Wide

Match List / Match Menu / Support / Logout

Kangaroos vs Blues Clues
Seniors 11/03/08

Match Menu

Enter Final Match Scores

Kangaroos

- Team Selection
- Add/Edit Match Jumper Numbers & positions
- Add / Edit Team Officials
- Enter Detailed Player Results
- Reports
 - Team Sheet
 - Player Positions Report
- Club Options
 - Add/Edit Club Jumper Numbers

Blues Clues

- Team Selection
- Add/Edit Match Jumper Numbers & positions
- Add / Edit Team Officials
- Enter Detailed Player Results
- Reports
 - Team Sheet
 - Player Positions Report
- Club Options
 - Add/Edit Club Jumper Numbers

Done reg.sportingpulse.com 3:54 PM

Enter the number of goals kicked in the box next to the appropriate players name. Enter a 1 in the box next to the best players name, going down to 6 for the 6th best player.

6 players must be entered into the best column. If not, the details will not save.

Goals must add up to the "Full Time Score Goals". If not, the details will not save.

Click "Save" when completed.

Online Results - Mozilla Firefox

File Edit View History Bookmarks Tools Help

SportingPulse (ANZ) Pty Ltd (AU) https://reg.sportingpulse.com/olr_v3/onlineResults.cgi?atID=1&a=DP_d8mID=

Most Visited Getting Started Latest Headlines Customize Links Free Hotmail Windows Marketplace Windows Media Windows

AFL footyweb.com.au Local Footy Australia Wide

Match List / Match Menu / Support / Logout

Kangaroos vs Blues Clues
Seniors 11/03/08

Notes from Association

Bests are numbered 1 to 6 with 1 being best

Summary for Kangaroos

Full Time Score Goals 11 | Full Time Score Behinds 8 | Full Time Score Points 74 |

Save

Players	Goals	Best
(#4) Ashford, William ID -	1	6
(#7) Holdsworth, John ID -	4	
(#18) Bold, Geoff ID -		1

Save

Done

start Server Connection - t... WRFL ONLINE USER ... Online Results - Mozill... reg.sportingpulse.com 3:58 PM

To check that your match details have saved and are correct, the WRFL website will have a icon on the side bar which will be titled "Weekend Scores". Click this button, locate your game and check all information. Use this button to also obtain results from other matches.

Any problems with internet connection, OnLine Results connection etc. on match days, should be referred to:

Saturdays (Div 1 and 2 Seniors & Reserves, Under 18's)

David Newton – GM, Football Operations
0410 628 067

Sundays (Juniors)

Ben McManus - Football Operations and Club Development Officer
0414 399 885

APPENDIX 1

All teams must have selected players into a match, PRIOR to the match commencing.

It is the HOME teams' responsibility to enter in final team lists, scores, best player and goal kickers.

Non compliance with the time lines listed below will result in club fines.

GRADE	TIME	MINIMUM REQUIREMENT
Division 1 & 2 Seniors	No Later Than 6.00pm Match Day	Remove players who did not play in match Add players who did play in match Quarter by quarter goals and behinds Final goals, behinds and total points Best players and goal kickers
Division 1 & 2 Reserves, Under 18	No Later Than 6.00pm Match Day	Quarter by quarter goals and behinds Final goals, behinds and total points
Division 1 & 2 Reserves, Under 18	No Later Than 11.00am Monday	Remove players who did not play in match Add players who did play in match Best players and goal kickers
All Junior Grades	No Later Than 6.00pm Match Days	Quarter by quarter goals and behinds Final goals, behinds and total points
All Junior Grades	No Later Than 11.00am Monday	Remove players who did not play in match Add players who did play in match Best players and goal kickers

It is recommended clubs print at least 6 team sheets for a match day, once players have been selected in a match.

Team sheets MUST be printed from the SportingPulse program.

PER TEAM - A team sheet must be provided to the umpires prior to the match commencing, including player signatures.

A team sheet should be supplied to the WRFL Radio Team for the match of the round, with the players listed who will be playing.

A team sheet must be supplied to the umpires after the match which has crossed out players who did not play, has written in players who did play, and lists best players and goal kickers OR this information should be written on the team sheet supplied to the umpires before the match.

A team sheet must be supplied to the HOME team manager after the match which has crossed out players who did not play, has written in players who did play, and lists best players and goal kickers.

APPENDIX 2

GRADE	MAXIMUM NUMBER OF PLAYERS
Division 1 Seniors	22
Division 1 Reserves	24
Division 2 Seniors	22
Division 2 Reserves	24
Under 18	25
Under 16	25
Under 14	25
Under 13	25
Under 12	25
Under 11	25
Under 10	25
Under 9	25